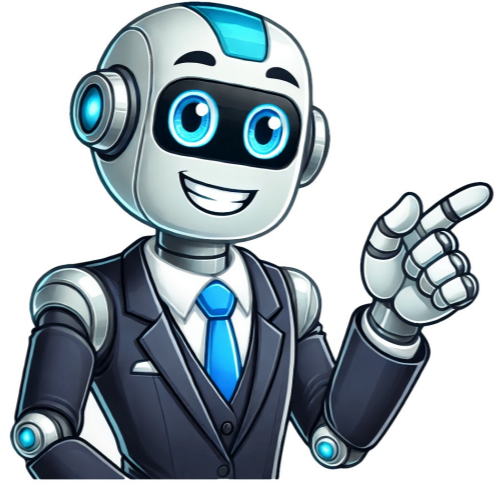


I'm not robot





When your car's alternator isn't charging the battery, it means the alternator isn't generating enough power to keep the vehicle's electrical system, potentially leading to a dead battery or other electrical issues. An alternator is the power plant in your vehicle that not only charges your car's battery while driving but also powers devices like radios. It may fail to charge your vehicle, and you'll notice this before or during a trip. In this article, we'll explore what causes a car alternator to charge the battery and what you should do. Here are 10 possible reasons why your car alternator might not be charging your battery: Firstly, if the serpentine belt is dead or poor, the alternator won't function due to a crack or being old. Additionally, overtightening can cause it to fail. If the belt is damaged, you'll notice rattling or whining noises caused by the bearing. Secondly, an alternator fuse might blow while starting the car or driving, resulting from excessive power surge or aging. Thirdly, if the battery is failing, the alternator and battery won't work together, causing the vehicle's lights to fail. Fourthly, if the engine starts but then stops, it may indicate a failing battery that consumes more power quickly. Fifthly, corrosion on the battery terminals can prevent the alternator from charging the battery, which can occur due to an outdated battery or overcharging. Sixthly, if the Engine Control Unit (ECU) has an error, your dashboard display may show issues, and you'll need to consult a professional for assistance. Let's get started! Your vehicle's electrical system is comprised of various components, including the alternator, which supplies power to the battery when it fails. If the Electronic Control Unit (ECU) malfunctions, this might cause the car's battery to drain, leading to engine stalls or failure to start. A faulty ECU command can also prevent the alternator from charging. The Voltage Regulator is a crucial part that ensures the charging voltage remains stable; without it, the battery will lose power and may even cause accessories and wires to malfunction. If your car's alternator isn't charging the battery properly, there are several things you can try: First, check the alternator belt for wear, damage or looseness. If it needs to be tightened or replaced, do so. Next, make sure all electrical connections to the alternator are secure and free from corrosion. Then test the battery to ensure it's in good condition and holding a charge. Sometimes a weak or dead battery can cause symptoms similar to those of an alternator problem. You should also look for a blown alternator fuse and replace it if necessary. Use a multimeter to measure the voltage across the battery terminals while the engine is running, as this should read around 13.5 to 14.5 volts if the alternator is working correctly. If the readings are abnormal, you may need to check for corrosion on the battery terminals and clean them as needed. Defective parts inside the alternator can also cause problems, so it's a good idea to test these components as well. If you're not sure how to do any of this, it's best to take your vehicle to a qualified mechanic or automotive shop for proper inspection and repair. A faulty alternator can cause various problems with your vehicle's electrical systems. It generates a magnetic field that induces electricity, powering the car's electrical systems and recharging the battery. The alternator is crucial for running components like headlights, radio, air conditioning, and power windows. Without it, the battery would quickly drain, leaving you stranded. The battery provides the initial energy to start the car, while the alternator keeps the battery charged while the engine is running. A malfunctioning alternator can cause your car to slowly come to a halt. If your alternator is failing, look out for these signs: 1. **\*\*Dimming Headlights\*\***: Flickering or dim headlights at night could indicate insufficient power from the alternator. 2. **\*\*Warning Light\*\***: A "check engine" light might appear if your vehicle's electrical system encounters problems, possibly due to a bad alternator. 3. **\*\*Strange Sound\*\***: Grinding noises or high-pitched whines coming from the engine compartment could signal that the alternator is struggling to turn and needs replacement. 4. **\*\*Dead Battery\*\***: Unexpectedly dead or repeatedly dying batteries may indicate the alternator isn't charging it properly, requiring replacement. 5. **\*\*Electrical Issues\*\***: Failures in electrical systems like power windows not working, radio malfunctioning, and dashboard lights not turning on are signs of a bad alternator. 6. **\*\*Loss of Power\*\***: Sudden losses of power while driving or trying to start the car might be due to an underperforming alternator. 7. **\*\*Belt Wear\*\***: Visible wear on serpentine belts could indicate increased stress, possibly caused by a failing alternator. 8. **\*\*Overheating\*\***: If your engine temperature gauge shows higher readings than usual, it could suggest that the alternator is working too hard and needs to be replaced. 9. **\*\*Sudden Vibration\*\***: Noticing sudden vibrations while driving might indicate that the alternator is out of balance or faulty. 10. **\*\*Age\*\***: Older cars with high mileage are more likely to experience alternator problems due to wear and tear over time. 1. Low Voltage IssuesA faulty alternator can lead to low voltage problems, making it difficult for your vehicle's systems to function properly. 7. Burning Rubber SmellBurning smells under the hood often indicate serious issues, and a burning rubber smell accompanied by smoke could signal that your alternator belt is slipping or damaged. 8. Overheating EnginesOverheating can be a symptom of a malfunctioning alternator, as it may struggle to provide enough power for the engine's cooling system. 9. Starting IssuesIf you're having trouble starting your car, even with a new battery, it could be a sign that your alternator is failing to provide the necessary power. 10. Sluggish Power WindowsA faulty alternator can cause slow or unresponsive power windows due to insufficient energy delivery to the electrical system. A faulty alternator can trigger a range of issues, including whining or squealing noises, dimming headlights, and warning lights on the dashboard. It's essential to spot signs of a failing alternator early on to ensure vehicle health and safe operation. Common symptoms include unusual noises, such as grinding or rattling sounds, flickering lights, or a check engine light. Having a bad alternator is not only frustrating but also poses serious risks while driving, especially during long trips. To avoid costly repairs and potential danger, it's crucial to perform regular maintenance on your vehicle's charging system. If you do experience symptoms such as dim headlights, slow engine cranking, or strange noises coming from under the hood, don't delay in seeking professional help. A bad alternator can cause a dead battery, which is particularly hazardous when driving long distances and the car suddenly stops on the road. While it's technically possible to drive with a faulty alternator, it's not recommended due to the risks involved. The lifespan of an alternator depends on various factors including usage frequency, driving conditions, and age, but regular checks can help extend its life. Typically, an alternator lasts between 80,000-150,000 miles before needing replacement. Interestingly, a bad battery can also put pressure on the alternator, causing it to fail prematurely. Regularly checking your battery's health can prevent such issues. When it comes to replacing an alternator, costs vary depending on vehicle make and model, location, and complexity of the repair. On average, you're looking at around \$300-\$900, but prices can be higher in certain situations. Fortunately, there are ways to test your car's charging system at home using a multimeter or voltage tester, but if you're not familiar with these tools, it's best to consult a qualified mechanic for proper diagnosis. Warning signs of a bad alternator include dim headlights, slow engine cranking, sluggish acceleration, flickering dashboard lights, and strange noises coming from under the hood. Ignoring these symptoms can lead to more significant damage and costly repairs down the line. Don't wait until it's too late! If your car is exhibiting signs of a bad alternator, trust HEART Auto Care for diagnosis and repair. Our certified technicians will get you back on the road quickly and affordably. We've seen it all when it comes to bad alternators, so don't hesitate to bring in your vehicle if you notice issues like dim headlights or a battery warning light. We pride ourselves on doing the job right the first time, using state-of-the-art diagnostic tools and high-quality replacement parts. Don't risk getting stranded – trust our professionals for all your alternator needs. If you're experiencing any of these 10 common signs of a bad alternator: \* Dim headlights or interior lights \* Slow engine cranking \* Sluggish response when accelerating \* Flickering dashboard lights \* Burning smell from the hood \* Rapid battery draining \* Strange noises while driving \* Increased fuel consumption due to faulty spark plugs ...it's essential to address the issue promptly. Regular alternator checks can prevent more significant damage and costly repairs. Visit our site to schedule an appointment and maintain a healthy alternator and electrical system in your vehicle.

How to tell if your alternator is not working properly. Alternator no output. Effects of alternator not working. When the alternator is not working properly you should. Alternator stopped working. Alternator not working. How to troubleshoot alternator problems. Problem with alternator. How do i know if my alternator is not working properly. My car alternator is not working properly. Alternator problems and solutions.